

25 YEARS
DELIVERING
TRAINING
EXCELLENCE

2025 TRAINING BROCHURE

CONTROL SYSTEMS | INDUSTRY 4.0 | ELECTRICAL | HEALTH & SAFETY | QMS



CONTROL 2K
everything in control



APPROVED
CENTRE



Approved
training
provider
4280

Welcome to Control 2K

Providing first class services in Industrial Training, Systems & Design for 25 Years.

Located in South Wales with a world wide reputation for Control Systems training and support, Control 2K is a total solutions provider for the manufacturing and process industries.

We provide first class industrial, mechanical and electrical training; specialising in Control Systems and Industry 4.0 capability. From bespoke training packages tailored to your company requirements, to learning pathways designed to shape your career - all delivered at our fully equipped training centre in Bridgend.

We look forward to welcoming you to Waterton Technology Centre in the near future.



- Page 03 Which course is right for you?
- Page 03 Control Systems
- Page 05 Industrial
- Page 06 Domestic Electrical
- Page 07 Industry 4.0
- Page 08 Health & Safety
- Page 09 Business Management & Improvement
- Page 10 Booking Information

BENEFITS OF INDUSTRIAL TRAINING:

- **Reduced Downtime:** Minimise downtime with well-trained employees who can quickly diagnose and resolve equipment issues.
- **Proactive Maintenance:** Train your team in predictive and preventative maintenance techniques, reducing unexpected equipment failures and maintenance costs.
- **Increased Equipment Lifespan:** Extend the life of your machinery through proper use and maintenance practices taught during training.
- **Faster Problem Resolution:** Equip your workforce with the skills to quickly identify and fix issues, leading to faster problem resolution and less production downtime.
- **Real-Time Monitoring:** Train staff on the use of real-time monitoring systems to promptly address inefficiencies and maintain optimal performance.
- **Compliance and Safety:** Ensure your team adheres to industry standards and safety regulations, reducing the risk of accidents and legal issues.
- **Customisable Programs:** Tailor training sessions to address specific challenges and goals unique to your organisation.
- **Cost Efficiency:** Reduce operational costs in the long run by minimising errors, downtime and staff turnover through effective training.
- **Improved Quality:** Enhance the quality of your products and services with well-trained employees who understand best practices.

POPULAR COURSES

	DAYS	PRICE*
Control Systems	10	£1,900
Industrial Electrical	10	£1,900
Siemens TIA Portal PLC	4	£1,200
Fluid Power	3	£750
2382-22 City & Guilds 18th Edition Wiring Regulations	4	£750
2377-77 City & Guilds Level 3 Award in Portable Appliance Testing (PAT Non Electrical Personnel)	2	£500

SUPPORT & FUNDING

Thinking About a New Career?

Are you an individual looking to re-train or pursue a new career?

Not sure what courses you need to take to achieve your engineering ambitions?

Book a pathways session with our Training Centre advisors to discuss your plans. Let us help you find a suitable path. Whether you are ex-Armed Forces, facing redundancy or simply looking for a change, we can provide advice on achieving your goals and becoming the professional engineer you want to be.

Call our training centre on **01656 646404** to arrange your pathways session today.

*All prices are subject to VAT at current rate.

WHICH COURSE IS RIGHT FOR YOU?

With a wide range of courses offered by Control 2K, it is important to plan your training journey and follow the best pathway to suit your needs.

We have made our popular courses easier to navigate, to gain knowledge of fundamental principles and develop your skills in order to progress onto our higher level courses.

Who is the course for?

CONTROL SYSTEMS	INDUSTRIAL ELECTRICAL
Individuals who need to have a good understanding of a broad range of control systems and want to progress onto further controls courses such as specific PLC courses	Individuals who need a comprehensive understanding of industrial electrical systems, fundamental electrical principals and electrical maintenance

What topics do the courses cover?

CONTROL SYSTEMS	INDUSTRIAL ELECTRICAL
Health and safety, legislation and regulations and safe isolation (LOTO) Fundamental electrical principles Generation and distribution of electricity Basic electrical control circuits including protective devices, relays, contactors, switches and sensors Reading electrical schematics and understanding electrical symbols Motors, motor control methods and actuators Electrical measurement and test instruments Fault finding techniques and methodology Panel wiring and control circuit construction	Cable selection and installation Analog sensors and instrumentation Replacing electrical components Preventative maintenance of electrical systems
Pneumatics and electro-pneumatics Introduction to PLC control systems Basic PLC ladder logic, online monitoring and editing Control systems integration	

CONTROL SYSTEMS COURSES

	REF	DAYS	PRICE*
Control Systems This 2 week course comprises of Control Systems - Foundation INDR2040 and Control Systems - Intermediate INDR2050. This 2 week course has been developed to improve the knowledge and essential skills of personnel who will be expected to understand, repair and/or modify control systems typically found in industrial equipment in manufacturing and engineering facilities. Covering topics such as fundamental electrical principles, three phase theory, control power, relay logic, reading electrical schematics, motors and motor control, fault diagnostics and introducing PLC control systems. <i>This course is a perfect primer for our more advanced PLC courses.</i>	INDR3060	10	£1,900
Control Systems - Foundation This course introduces the fundamental principles of industrial control systems including topics such as Electro-Pneumatics, control logic and panel wiring which are all delivered via practical hands-on exercises.	INDR2040	5	£1,200
Control Systems - Intermediate This intermediate level course further develops the control systems comprehension acquired during the Foundation course through additional practical learning exercises.	INDR2050	5	£1,200

*All prices are subject to current VAT rate.

Contact us via **01656 646404** or **training@control2k.co.uk**, or visit **www.control2k.co.uk**

CONTROL SYSTEMS COURSES

	REF	DAYS	PRICE*
Fluid Power A hands on approach designed for maintenance engineers, technicians or operators to improve efficiency, maintenance and fault finding. This course delivers a basic understanding of pneumatic, electro-pneumatic and hydraulic systems, equipment, symbols and drawings.	INDR1020	3	£750
CNC Programming - Introduction Learn the basic principles of CNC and CNC Programming. Covering CNC geometry, offsets, programming codes focussing on practical experience.	CTRL2010	2	£600
An Introduction to Industry 4.0 An engineers introduction to the principles and associated technologies in Industry 4.0. The course includes discussion of data capture, visualisation, connectivity and process analysis of automation.	CTRL5070	2	£600

PLC COURSES

	REF	DAYS	PRICE*
Allen Bradley PLC RSLogix 5000 - Foundation Introduces delegates to the features of Allen Bradley PLC systems and RSLogix 5000 software. Designed to give you an understanding of the core functions and configuration required to be able to program and troubleshoot a PLC.	CTRL1020	2	£600
Allen Bradley PLC RSLogix 5000 - Intermediate Delegates will gain a deeper understanding of the Allen Bradley RSLogix Studio 5000 system. Including complex program structures, programming, fault finding features touching on PanelView HMI communications.	CTRL1040	3	£900
Allen Bradley PLC RSLogix 500 Introduces features and tools of Allen Bradley PLC systems and RSLogix 500 software. Designed to give you an understanding of the core functions and configuration required to be able to program and troubleshoot a PLC.	CTRL1060	3	£900
Mitsubishi PLC GX Works2 - Foundation An introduction to Mitsubishi Q, L and FX Series PLC, it explains the basic hardware structure and introduces PLC programming using the GX Works2 software.	CTRL3010	2	£600
Mitsubishi PLC GX Works2 - Intermediate Based around the GX Works2 software in simple mode with labels, it runs through the advanced features of the software, using the Q, L and FX Series PLCs.	CTRL3020	3	£900
Omron PLC CX Programmer This course offers knowledge of Omron PLC hardware and its functionality through to a basic familiarity with the CX-Programmer software suite. In-depth features of the Omron PLC including additional ladder logic functions and diagnostic features are covered.	CTRL4060	3	£900
Siemens TIA Portal PLC Focused on TIA Portal (V16) Software, this course gives you basic knowledge to configure, program and fault find on the Siemens S7-1500 range. Basic HMI functionality is also covered.	CTRL5020	4	£1,200
Siemens TIA HMI Foundation This course covers everything you would need to know about setting up a Siemens HMI using the TIA software package. Content includes configuring a project and communication, designing screens using standard controls, recipes, alarms and messages.	CTRL5030	2	£600
Siemens Communications (PROFINET and PROFIBUS) For delegates with previous knowledge of Siemens S7 or TIA Portal. With focus on practical elements that will incorporate modern Ethernet networks using simple methods; how to analyse and solve complex PROFINET/PROFIBUS breakdowns using the necessary tools.	CTRL5050	1	£400

*All prices are subject to current VAT rate.

Contact us via **01656 646404** or **training@control2k.co.uk**, or visit **www.control2k.co.uk**

INDUSTRIAL ELECTRICAL COURSES

	REF	DAYS	PRICE*
Industrial Electrical This course comprises of Industrial Electrical - Foundation ELEC2030 and Industrial Electrical - Intermediate ELEC2040. This 2 week course is an ideal course for mechanical technicians or candidates who are expected to perform basic fault diagnosis and preventative maintenance tasks on electrical systems. The course covers topics such as electrical health and safety, fundamental electrical principles, generation and distribution of electricity, basic electrical circuits, reading electrical schematics, three phase motors and motor control circuits, panel wiring, electrical testing and fault diagnosis, replacing electrical components and preventative maintenance of electrical equipment. NB. If candidates are going to follow onto PLC/control systems courses we strongly recommend that they complete the alternative Control Systems course INDR3060.	ELEC3050	10	£1,900
Industrial Electrical - Foundation This is a very practical and hands on course which introduces the fundamental knowledge and skills required to understand and work on industrial electrical systems.	ELEC2030	5	£1,200
Industrial Electrical - Intermediate This course builds upon the skills and understanding acquired during the Foundation course though further practical exercises. On completion of the course, candidates will be competent in basic electrical fault diagnosis and able to perform a variety of electrical maintenance activities.	ELEC2040	5	£1,200
Safe Isolation - LOTO This course covers the identification of single and three-phase supplies, locking mechanisms, test instruments and lock-out tag-out procedures.	ELEC2070	1	£300

WELDING COURSES

Welding BS4872 - No Experience Multi-disciplined introduction course suitable for students who have never welded before, or have had the equivalent of just a few days work experience. It is designed as an introduction to the various types of welding, MIG or MMA.	INDR3010	5	£2,200
Welding BS4872 - Experienced Suitable for an experienced welder with the capability of achieving fillet and butt welds in plate in either MMA, MIG or TIG. Delegates must be able to demonstrate competency.	INDR3020	3	£1,350
Welding BS4872 Re-Test Re-test only for delegates wishing to renew their certification.	INDR3040	2	£1,200
Evidence of current valid certification will be required at the time of booking.			
Welding Company Bespoke Course Bespoke course is designed for specific company requirements and can be tailored towards different levels of ability. One company per booking with a minimum of 3 students.	INDR3030	-	CALL

Call for more information.

*All prices are subject to current VAT rate.

DOMESTIC ELECTRICAL COURSES

	REF	DAYS	PRICE*
Electrical - Combined Electricity at Work Regulations (1989) - Duty Holder Helping employers and employees gain the knowledge and understanding needed to satisfy the requirements of EAW regulations and the subsequent responsibilities of the duty holder or appointed person.	ELEC2080	1	£300

CITY & GUILDS ACCREDITED ELECTRICAL COURSES

2382-22 - 18th Edition IET Wiring Regulations This course will provide delegates with knowledge of the latest industry standard regulations. It is a requirement that all electrical installations comply with BS 7671:2018, 18th Edition. Price includes course textbook. 2382-22 is delivered as a 3 day course with a separate certification exam held on the 4th day.	ELEC1030	4	£750
2391-52 - Level 3 Award in Initial and Periodic Inspection and Testing of Electrical Installation This course covers both Periodic Inspection and Initial Verification. Aimed at electrical personnel who carry out or supervise the testing and inspection of installations. Price includes course textbook. Examination held on separate day. Candidates MUST have completed and passed the 2382-22 18th Edition prior to attending this course.	ELEC1060	5	£1,000
2377-77 - Level 3 Award in Portable Appliance Testing (PAT Non Electrical Personnel) Designed for non-electrical delegates, attendees will develop knowledge and understanding to implement a testing programme for portable electrical appliances. Price includes course textbook. Examination held on separate day.	ELEC1020	2	£500

*All prices are subject to VAT at current rate.

INDUSTRY 4.0 COURSES

In today's modern manufacturing environment it is important to have a better understanding of the connectivity between systems and understand the key concepts of intergration and interoperability, to support the decision-making process. Most companies are keen to capitalise on the intelligence and enhanced visibility leveraged through Industry 4.0 to improve efficiency, productivity and profit.

Whether you are an engineer looking to solve a manufacturing challenge, an Operations Manager looking for improvements in your KPIs; or an MD looking to improve your bottom line - Industry 4.0 is all about the tools and knowledge you need for the engineering of the future.



Why Industry 4.0?

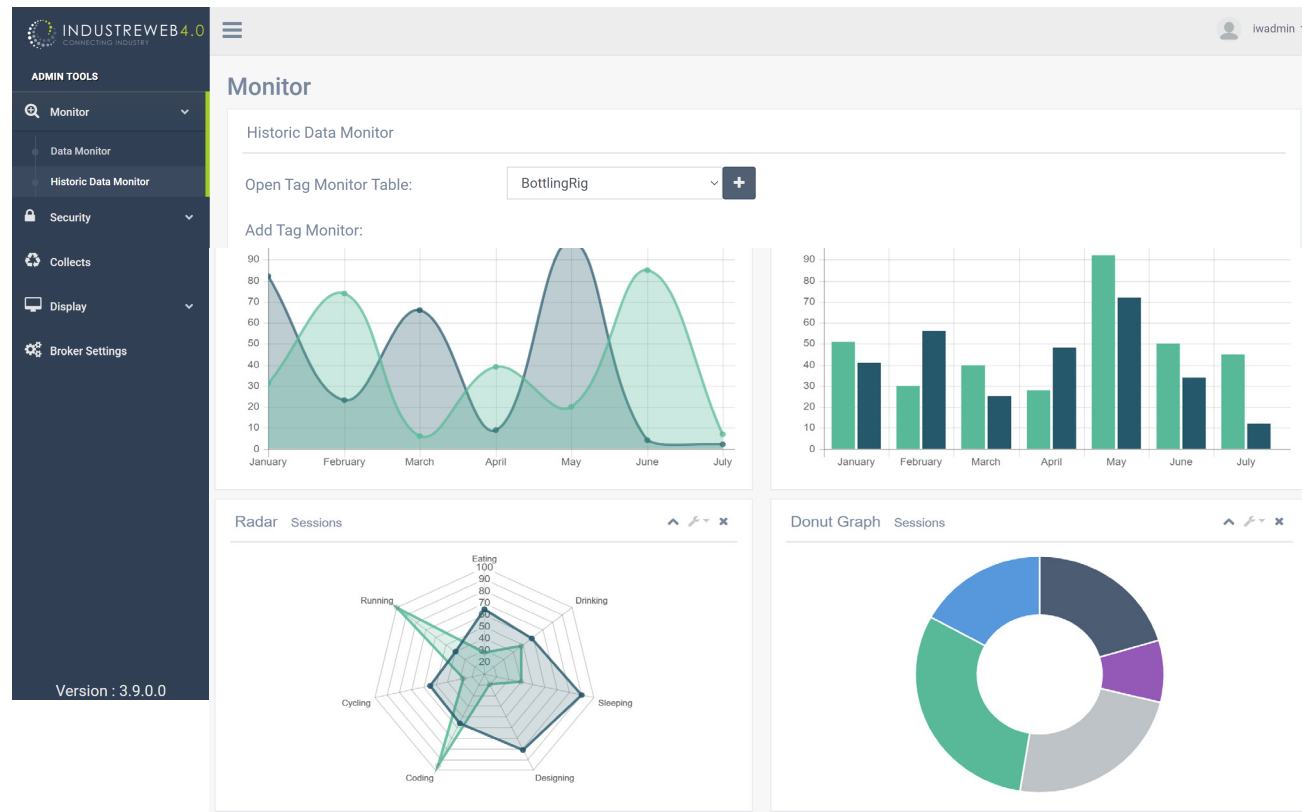
Developing a holistic and consolidated understanding of the application and benefits of simulation and digital twinning in manufacturing environments.

Understanding and articulating the business case for introducing simulation and digital twinning, as well as determining the potential application of the technology in a specific industrial setting.

Course Content

- What is Industry 4.0 in a manufacturing context?
- Industry 4.0 instrumentation - Technology Elements
- Industrial Cyber Security
- Applications for Industry 4.0
- Data aggregation and analytics
- Process simulation and optimisation using digital twins

Priced at £600 +VAT for 2 days.
Course Code - CTRL5070



IOSH COURSES

	REF	DAYS	PRICE*
IOSH - Managing Safely The number one health and safety course in any sector. This course will ensure you can assess and control risks and hazards, understand your responsibilities around health and safety, enable you to investigate incidents and gain knowledge, skills and confidence to manage health and safety within your team.	HSAF1010	3	£495
IOSH - Working Safely Covers the essentials of health and safety in the workplace and is aimed at all employees within all organisations.	HSAF2330	1	£145
IOSH can also be delivered onsite, please call for more details.	-	-	CALL

CIEH ACCREDITED COURSES

CIEH Foundation Certificate in Manual Handling (Level 2) Legislation requires employers to take appropriate steps to reduce risk of injury to employees. This qualification combines the theory and practical elements of manual handling, teaching techniques to lift, carry, push and pull objects safely.	HSAF1090	0.5	£150
CIEH Intermediate Certificate in First Aid at Work (Level 3) Provides delegates with sufficient skills and knowledge to carry out the role of a First Aider in the workplace in accordance with current legislative requirements. Suitable for anyone wishing to be the designated First Aider in the workplace.	HSAF1040	3	£680

IN-HOUSE SAFETY COURSES

Abrasive Wheel Safety (Portable Grinders) Provides delegates with information that will enable them to change, replace and maintain cutting discs on portable grinding machines. They can then use them safely and in accordance with requirements of the provision and use of Work Equipment Regulations 1998 (PUWER).	HSAF2050	0.5	£150
Introduction to COSHH Developed to provide those working near hazardous substances with knowledge of risks and what their responsibilities are under current legislation. You will find out about associated health risks and cover the benefits of following COSHH guidelines.	HSAF2140	1	£295
Safe Use of Abrasive Wheels This course will provide an introduction to working safely with abrasive wheels so you can understand the risks and know which control measures are needed to prevent injury. Also allowing for familiarisation with the associated regulations.	HSAF2190	1	£295
Safe Use of Engineering Workshop Equipment This programme has been developed to provide delegates with an understanding of major risks in workshops and how to control them in order to minimise injuries.	HSAF2200	1	£295
Safe Use of Power Hand Tools Introduces delegates to skills for using power hand tools, in accordance with health and safety legislation and in addition to best work practices.	HSAF2220	1	£295
Working at Heights This programme introduces delegates to the requirements of the current "Working at Heights Regulations 2005", so that individuals can comply with their duties, whether planning, controlling or conducting work tasks at height.	HSAF2310	1	£295

***All prices are subject to VAT at current rate.**

QUALITY MANAGEMENT

ISO 9001:2015

Certification to ISO 9001:2015

Tailored to suit your business requirements, the ISO 9001:2015 standard is utilised in developing training of policies and procedures thus facilitating achievement of the role of Internal Auditor, as well as an implementation of ISO management systems. Assessment by a UKAS accredited certification body is included.

REF	DAYS	PRICE*
BMBA1030	TBC	CALL

Introduction to ISO 9001:2015

An overview of what the ISO 9001:2015 standard requires. This course will benefit those who are managing, or would like to manage an ISO based quality management system.

BMBA1010	1	£345
----------	---	------

LEAN TOOLS AND TECHNIQUES

5S Workplace Organisation

An introduction to the 5S methodology, incorporating the use of visual displays and visual controls to minimise clutter and introduce orderly process to the work place. SORT, SET, SHINE, STANDARDISE and SUSTAIN.

BMBA2050	1	£295
----------	---	------

Changeover Reduction (SMED)

To ensure delegates understand the systematic approach to the measurement and reduction of lost production time.

BMBA2250	1	£295
----------	---	------

Continuous Improvement

Introduces improvement techniques that can be applied in any environment. Achieve greater efficiencies through process mapping to deliver improvements.

BMBA2230	1	£295
----------	---	------

Introduction to Lean Awareness

An overview of 'Lean Thinking' to enable processes to be delivered better, faster and cheaper.

BMBA2210	1	£295
----------	---	------

Six Sigma Lean Training

This highly interactive course is designed for people who will get involved in Six Sigma improvement projects in their workplace.

BMBA2280	5	£1475
----------	---	-------

Total Productive Manufacturing

Learn how to recognise methods and training which can show you how to increase the output and efficiency of equipment.

BMBA2240	1	£480
----------	---	------

LEADERSHIP AND MANAGEMENT COURSES

Effective Leadership

Develop skills that will ensure effective leadership of a team and its managers, with the objective of maximising performance. Explore leadership techniques and learning styles and create more effective teams.

BMBA2270	1	£480
----------	---	------

Project Management

The course aims to provide managers with an understanding of the techniques available and how they may be used in the management of projects.

BMBA2150	1	£295
----------	---	------

Strategy and Direction Setting

A practical training in business strategy, developing mission statements and SMART objectives. Tips and tools for engaging your board members.

BMBA2160	1	£295
----------	---	------

*All prices are subject to VAT at current rate.

Contact us via **01656 646404** or training@control2k.co.uk, or visit www.control2k.co.uk

BOOKING INFORMATION

Courses can be booked online or over the telephone, payment can be made by card or by invoice and must be made prior to the course start date.

Each delegate will receive joining instructions prior to the start date of their chosen course, together with any health and safety policies. Any cancellations must be received 2 weeks prior to the course start date.

All prices are subject to VAT at current rate.

For our full cancellation policy and further information, please consult our website where the full terms and conditions are published:

<https://www.control2k.co.uk/termsandconditions>

Training Accounts available subject to conditions, please contact training@control2k.co.uk for further details.

Training Accounts

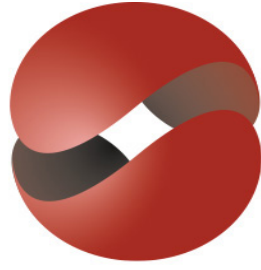
We specialise in creating bespoke training for your new recruits, apprentices and long-established teams. Creating a company training account with us gives you the ability to customise our courses so that they relate to your industry requirements. Set up your own unique training schedule and pay monthly on account.

Start the ball rolling and get ahead of your competitors today. Call our Training Centre on **01656 646404** to discuss your requirements.

Waterton Technology Centre
Waterton Industrial Estate
Bridgend
CF31 3WT



Contact us via **01656 646404** or training@control2k.co.uk, or visit www.control2k.co.uk



CONTROL 2K
everything in control

Providing you with solutions for
Training, Systems & Design



www.control2k.co.uk

01656 646404

